



# JUNO AUTO TRADER

U S E R G U I D E

**SELECT OPTIMAL  
TRADING STRATEGIES**



MAIN RATING 92 PRO 3 MY FAVOURITES 0 RISK/REWARD 116 ALL STRATEGIES 291

ADD TO YOUR WEBSITE

Quick search	Age	Growth	Avg per month	Total pips	Max drawdown	DD recovery period	Recommen. minimum	Profitability	Strategy Provider
<b>EasyMoney</b> 71.01 JM Rank 	1 year 5 months	299.45%	8.96%	15,595.20	60.00%	3w, 5d	1,509.65	99.20%	 ★★★★★ Kostyan80
<b>ProfitSystem200</b> 70.94 JM Rank 	1 year 2 months	952.12%	18.64%	6,489.70	56.00%	1m, 13h	388.97	94.94%	 ★★★★★ Maxim1975
<b>Flow</b> 69.10 JM Rank 	1 year 1 day	315.98%	11.50%	4,886.80	43.00%	1w, 2d	946.65	60.11%	 ★★★★★ DonLazlo
<b>OPSystem</b> 66.36 JM Rank 	1 year 8 months	351.62%	7.51%	9,902.20	55.00%	2m, 3w	2,364.54	92.78%	 ★★★★★ PTG

1. Go to 'Strategies' page to review available trading strategies.

JUNOMARKETS

CONNECT LIVE ACCOUNT STRATEGIES TRADING TERMINAL STATEMENTS PORTFOLIO

EasyMoney 71.01 JM Rank

+ ADD TO PORTFOLIO SHARE FOLLOWERS 413

+299.45% Equity growth

+15595.2 Total pips

+8.96% Avg per month

60% Max drawdown

NORMAL Level of risk

1509.65 USD Recommended minimum

Kostyan80 Ukraine ★★★★★  
Dear members, welcome to my profile!  
2

Description changed 7 months, 1 week, 4 days ago

ALL PERIOD 1 WEEK 1 MONTH 3 MONTHS 6 MONTHS 1 YEAR

13.10.2015 16.03.2017

2. Click on available and preferred strategies to evaluate detailed performance of selected strategies. After reviewing the performance, click "Add To Portfolio" to subscribe to and add the preferred strategies to your trading portfolio.

CONNECT LIVE ACCOUNT STRATEGIES TRADING TERMINAL STATEMENTS PORTFOLIO

0.94 JM Rank

+ ADD TO PORTFOLIO SHARE

7 ps +18.64% Avg per month 56% Max drawdown NORMAL Level of risk 388.97 USD Recommendation

ederation ★★★★★  
ne to my profile!  
Description changed 5 months, 2 w

MONTHS 6 MONTHS 1 YEAR

Trading account  
DEMO26444

Automatic settings adjustment  
 Percentage of the total balance  
 Fixed trade size

This option will automatically select the most favourable settings for trading strategy depending on your current account usage and available funds.

Show more

SAVE

3. Select the trading account you wish to add the strategy to. We recommend the "Automatic settings adjustment" option for new and inexperienced traders to get started.

CONNECT LIVE ACCOUNT STRATEGIES TRADING TERMINAL STATEMENTS PORTFOLIO

0.94 JM Rank

+18.64% Avg per month

56% Max drawdown

NORMAL Level of risk

388.97 USD Recommendation

Trading account: DEMO26444

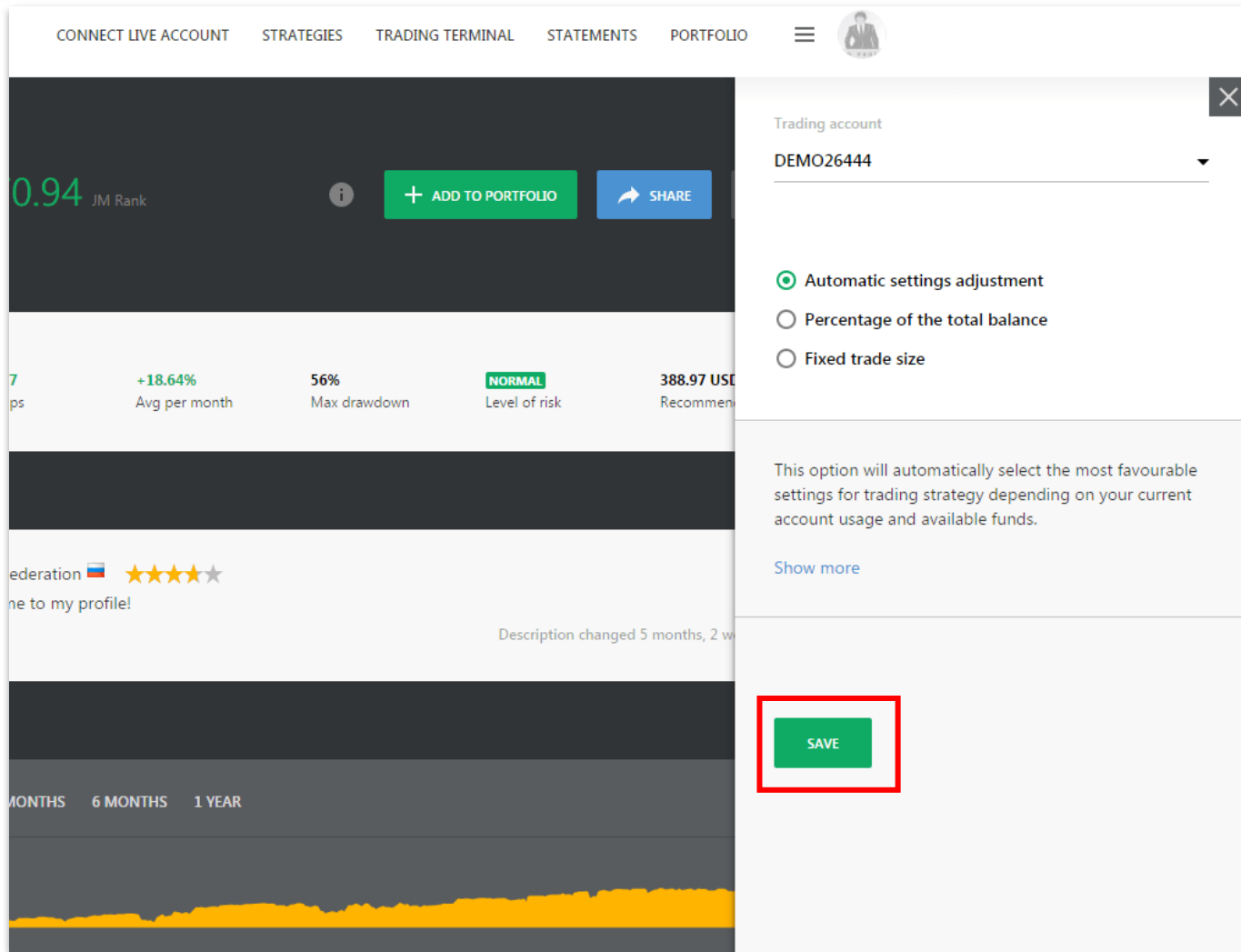
- Automatic settings adjustment
- Percentage of the total balance
- Fixed trade size

This option will automatically select the most favourable settings for trading strategy depending on your current account usage and available funds.

Show more

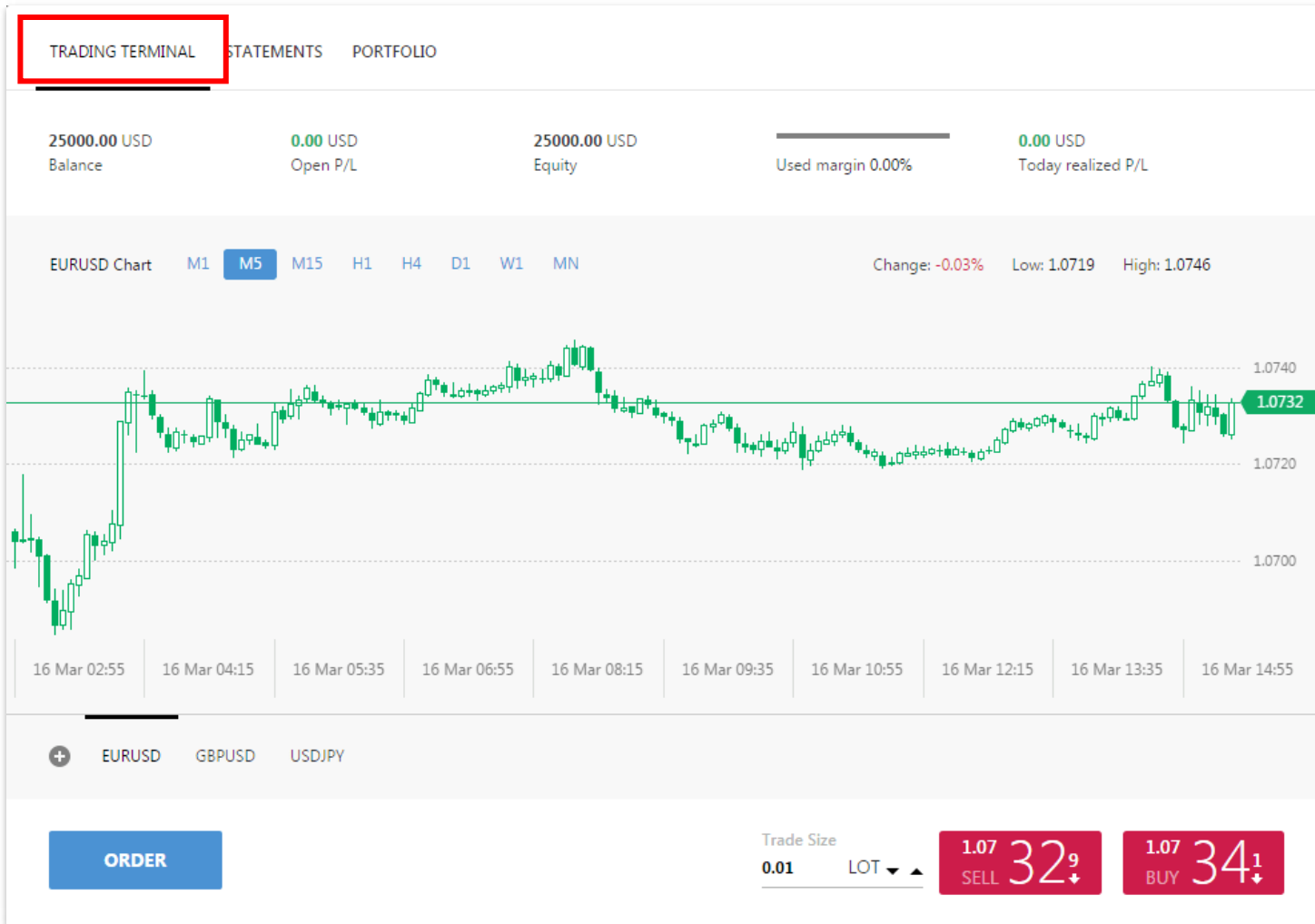
SAVE

MONTHS 6 MONTHS 1 YEAR



4. Click 'Save' and you have successfully added your preferred trading strategy to your investment portfolio!

# **REVIEW PERFORMANCE**



1. Click “Trading Terminal” to monitor trades and pending orders in real-time.



TRADING TERMINAL <b>STATEMENTS</b> PORTFOLIO						
<b>+0.13 %</b> Growth		<b>+352.23 USD</b> Profit/Loss	<b>+3,466.80</b> Total pips	<b>247</b> Total trades		
Trading strategy	Growth	Profit/Loss	Pips	Drawdown	Trades	Profitability
<input type="checkbox"/> trendintruderturbo	0.01 %	2.30 USD	23.00	0.00 USD	1	
<input type="checkbox"/> Vipro	0.59 %	151.02 USD	1,510.20	0.00 USD	71	
<input type="checkbox"/> Happy Forex	0.01 %	2.44 USD	24.40	0.00 USD	6	
<input type="checkbox"/> Nice Moment	0.00 %	0.00 USD	0.00	0.00 USD	0	
<input type="checkbox"/> Super Ai-Hedger Lite	0.00 %	0.00 USD	0.00	0.00 USD	0	
<input type="checkbox"/> Super Ai-Hedger Plus	0.78 %	196.47 USD	1,909.20	0.00 USD	169	

**GENERATE STATEMENTS**

2. To review the performance of closed trading transactions in your account, go to 'Statements'.

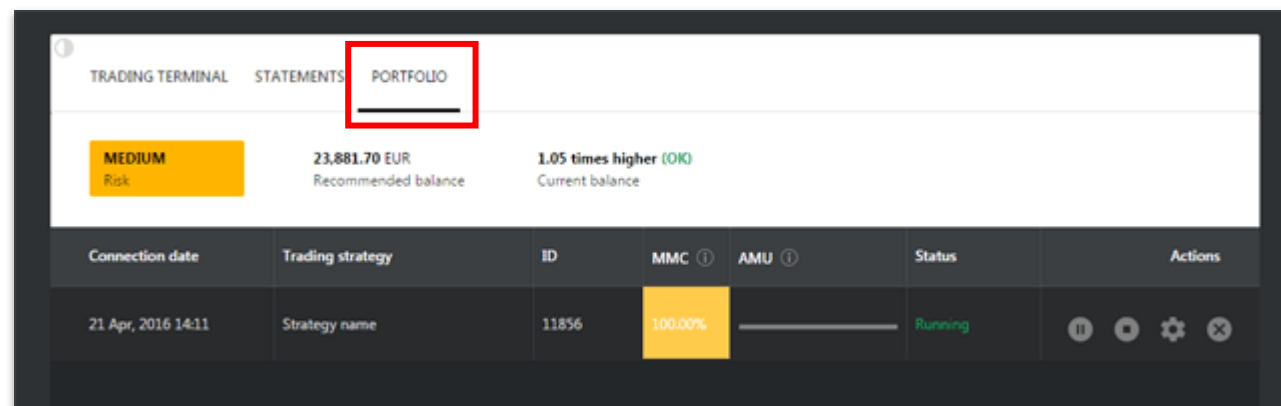
You can observe various equity growth charts, historical performance of selected strategies, and calculate relevant statistical data to facilitate better decision-making for your portfolio.

**CUSTOMIZE INDIVIDUAL SETTING**

## Basic option

Go to 'Portfolio' tab to review basic commands for the trading strategies in your investment portfolio. There are four basic commands: 'Pause', 'Stop', 'Modify', and 'Delete'.

- ✓ 'Pause' – this command is to pause new trading activities for the particular strategy, but still manage previously-opened trades.
- ✓ 'Stop' – this command is to completely stop any trading transactions and activities for the particular strategy.
- ✓ 'Modify' – this command is to adjust the setting of your portfolio customization. Refer to the section below for detailed information.
- ✓ 'Delete' – this command is to remove unwanted strategy from your trading portfolio.



## Portfolio customization

There are three basic options for portfolio customization: automatic settings adjustment, percentage of the total balance, and fixed trade size. To assist users with optimal customization, each setting has detailed information and supplementary options regarding trades and trade size.

### 1. Automatic settings adjustment

Automatic settings adjustment

Percentage of the total balance

Fixed trade size

### 2. Percentage of the total balance

Automatic settings adjustment

Percentage of the total balance

Fixed trade size

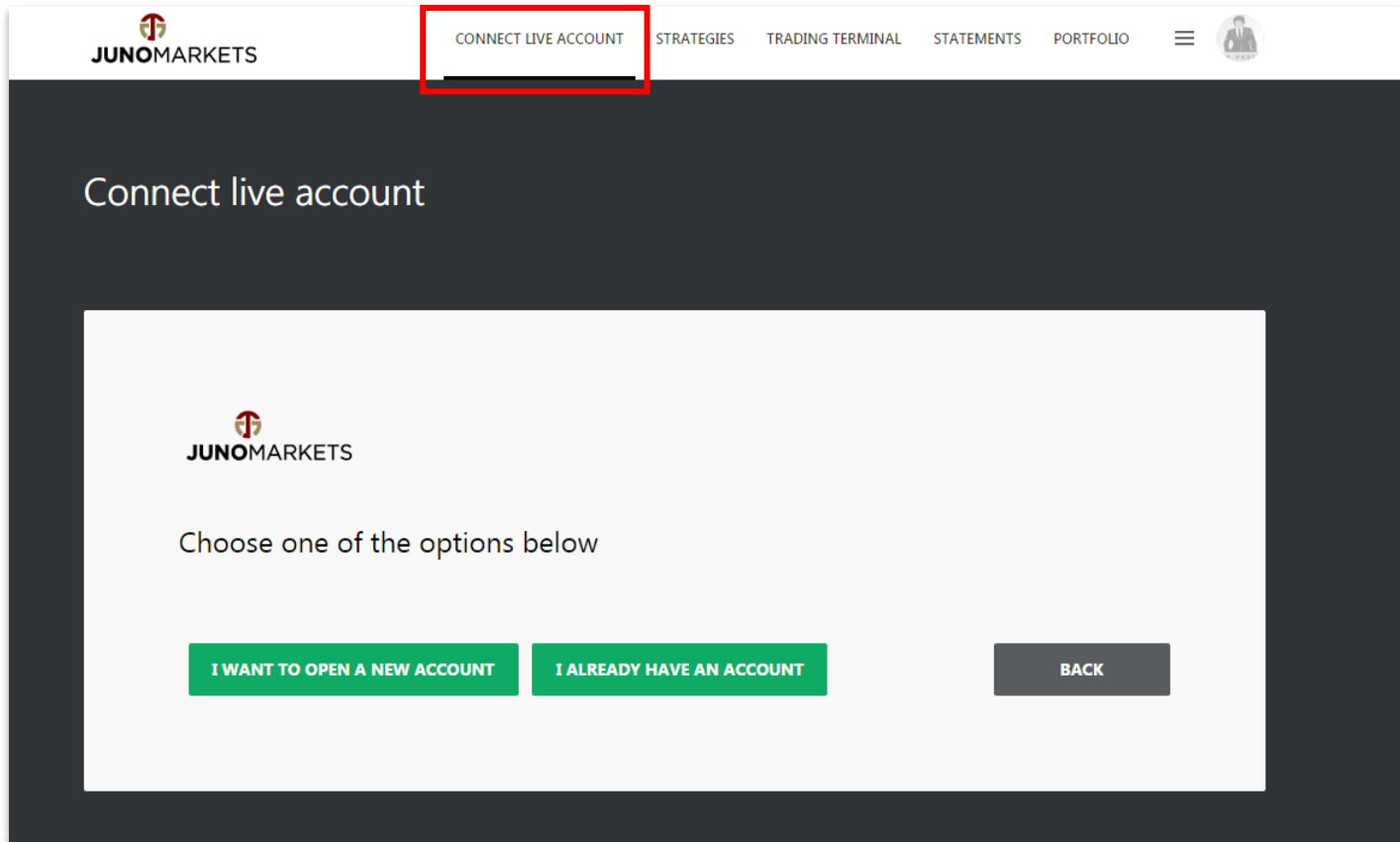
### 3. Fixed trade size

Automatic settings adjustment

Percentage of the total balance

Fixed trade size

**CONNECT TO LIVE ACCOUNT**



The screenshot shows the Juno Markets website interface. At the top, the Juno Markets logo is on the left, and a navigation menu is on the right. The 'CONNECT LIVE ACCOUNT' tab is highlighted with a red box. Below the navigation bar, the main content area has a dark background with the text 'Connect live account'. A white box contains the Juno Markets logo, the text 'Choose one of the options below', and three buttons: 'I WANT TO OPEN A NEW ACCOUNT', 'I ALREADY HAVE AN ACCOUNT', and 'BACK'.

**JUNOMARKETS**

CONNECT LIVE ACCOUNT STRATEGIES TRADING TERMINAL STATEMENTS PORTFOLIO

## Connect live account

**JUNOMARKETS**

Choose one of the options below

**I WANT TO OPEN A NEW ACCOUNT** **I ALREADY HAVE AN ACCOUNT** **BACK**

1. Go to 'Connect Live Account' tab to connect Juno Auto Trader account to your Juno Markets live account.



Click the button below to open your live account

**FILL THE APPLICATION FORM TO OPEN AN ACCOUNT**

Visit our webpage for full details on how to connect your account here: <https://www.junomarkets.com/en/junoautotrader/>

Fill in the form below to link your live account to the Juno Auto Trader platform

Full name: \_\_\_\_\_ Phone number: \_\_\_\_\_

Account number: \_\_\_\_\_ Trading server name: \_\_\_\_\_

Account type: \_\_\_\_\_

Message (optional): \_\_\_\_\_

**SEND**

**BACK**

2. Click "I Want to Open a New Account" if you have not yet registered a live account with Juno Markets. Proceed to "I Already Have An Account" if you already have a funded live account. Fill in the form below to complete the process of connecting to your live account. Click "Send" after you have filled in the required information.

You have successfully connected your Juno Auto Trader account to  
your Juno Markets live account!  
Verification and email notification will be sent to you within 48 hours.